

HyTec® – PROCESS WATER ANALYSIS FROM GROZ-BECKERT FOR WATER JET HYDROENTANGLEMENT SYSTEMS



The quality of process water used is decisive to the manufacture of spunlaced products. The properties of the water influence the service life of various machine components and of the jet strips.

The process water is also instrumental in determining the quality of the end product, not only when manufacturing hygiene products. Ensuring hygienically sound water quality is therefore essential.

Water is a highly versatile medium and can occur in varying levels of acidity or alkalinity as well as in partially or fully deionized form. It can also contain micro organisms, metal particles and other inorganic substances in varying concentrations.

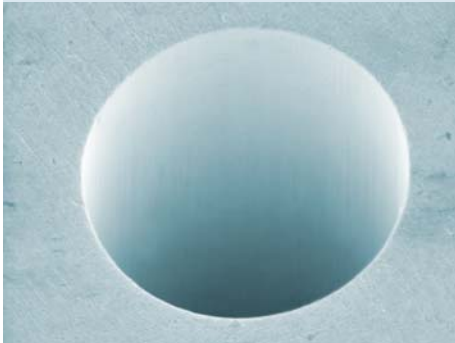
Alongside pH value, water hardness and chloride content, there are also a large number of other characteristics that determine water quality. Groz-Beckert can help you to obtain precise information about the process water you are using.

By performing a comprehensive laboratory analysis at Groz-Beckert, we examine your process water in respect of important hydrochemical parameters.

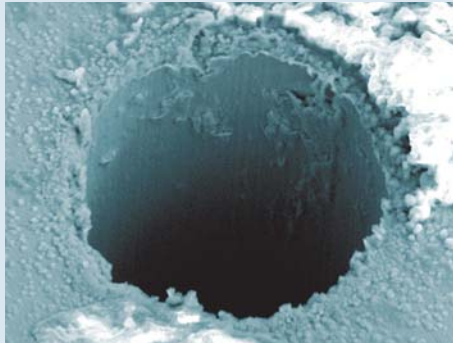
We will be pleased to explain ways in which you can improve the quality of your process water. If you have a requirement, please get in touch.

IMPORTANT CHARACTERISTICS FOR DETERMINING WATER QUALITY

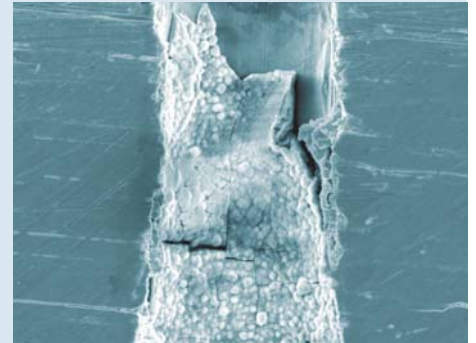
Illustration of different types of jet contamination



New jet



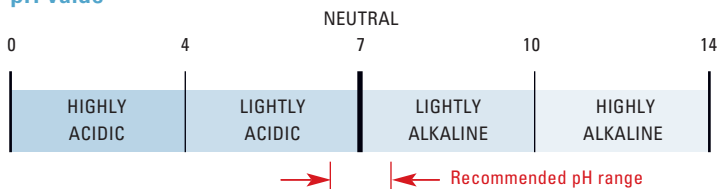
Used jet with limescale deposits



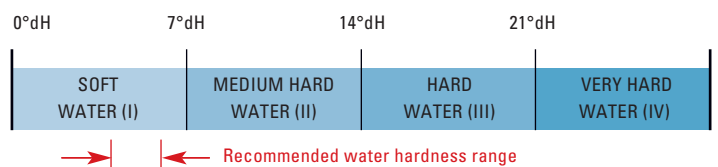
Cross-section through a contaminated jet

- pH value:** The lower the value in the acid range, the higher the risk of corrosion. When using light alloy parts, however, a high pH value will tend to have a negative impact. We consequently recommend a pH value in the range of 6.5 to 7.5.
- Water hardness:** Soft water encourages metals to dissolve, while excessively hard water results in clogged jets due to limescale build-up. We consequently recommend water with a hardness in the range of 4° to 6° dH.

pH value



Water hardness scale



- Chloride content:** The higher the chloride content, the higher the risk of corrosion. We recommend a chloride content below 100ppm (=>mg/l).

As a leading manufacturer of jet strips, Groz-Beckert offers its customers individual advice in conjunction with process water analysis. This entails a variety of tests including examination of the following characteristic variables:

- pH value
- Water hardness
- Chloride content
- Anions
- Cations